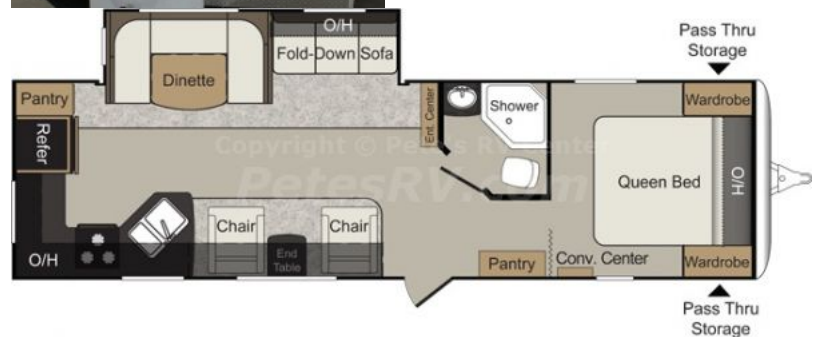




# 2012 Passport 3100RK

## Basic Info

Stock Number	15124
Year	2012
Brand	Passport
Model	3100RK
New / Used	New
Serial Nr	4YDT31026CT411804
VIN	NA
Type	Travel Trailer
Manufacturer	Keystone
Chassis	NA
Mileage	NA
Length	33 ft 9 in (10.29 m)
Weight	5,540
Fuel	NA
Nr of Slideouts	1
Interior Color	HARVEST



## Features and Equipment

- |  |   |   |
|--|---|---|
| <ul style="list-style-type: none"> <li>• EXTERIOR PACKAGE</li> <li>• TV ANTENNA W/BOOSTER</li> <li>• 6 GAL GAS/ELEC WATER HEATER W/DSI</li> <li>• OUTSIDE SPEAKERS</li> <li>• ENCLOSED UNDERBELLY</li> <li>• SPARE TIRE KIT</li> <li>• FOOT FLUSH TOILET</li> <li>• DOUBLE DOOR REFRIGERATOR</li> <li>• OVEN W/3 BURNER RANGE TOP</li> <li>• PRIVACY SHADES</li> </ul> | <ul style="list-style-type: none"> <li>• INTERIOR PACKAGE</li> <li>• FRONT DIAMOND PLATE</li> <li>• FOLDING ENTRY HANDLE</li> <li>• ELECTRIC AWNING</li> <li>• RVQ GRILL</li> <li>• HARVEST DECOR</li> <li>• SKYLIGHT IN BATH</li> <li>• 13.5 BTU A/C - DUCTED</li> <li>• 19" TV</li> </ul> | <ul style="list-style-type: none"> <li>• RVIA</li> <li>• EZ LUBE HUBS</li> <li>• TINTED SAFETY GLASS</li> <li>• 4 STABILIZER JACKS</li> <li>• EXTERIOR SHOWER</li> <li>• AM/FM/CD/DVD PLAYER</li> <li>• RAISED PANEL CABINET DOOR</li> <li>• MICROWAVE</li> <li>• DUCTED FURNACE</li> </ul> |
|--|---|---|

## Features and Equipment

- |   |   |  |
|---|---|--|
| <ul style="list-style-type: none"> <li>• Tube style bumper w/ sewer hose storage</li> <li>• Cambered for added structural support</li> <li>• Enclosed and heated underbelly (N/A 195RB)</li> <li>• High density bead foam insulation in sidewalls (R-7 insulation)</li> </ul> | <ul style="list-style-type: none"> <li>• Fully welded outriggers</li> <li>• Extra support cross members</li> <li>• Welded aluminum framed sidewalls</li> <li>• Laminated aluminum framed floor 2 thick</li> <li>• Stamped galvanized 5 thick crowned rafters</li> </ul> | <ul style="list-style-type: none"> <li>• 100% E coated Paco frame</li> <li>• Electric slide out system</li> <li>• Laminated gel-coated filon exterior walls</li> <li>• One piece breathable Darco protective wrap</li> <li>• One piece seamless Rubber roof</li> </ul> |
|---|---|--|

- R-11 floor insulation
- R-11 ceiling insulation
- Double entry steps at main door
- 4 scissor style stabilizer jacks
- Rain gutters with downspouts
- Outside cook center w/stove (Passport only)
- Exterior shower w/ hot & cold
- Load Equalization (spread axle design)
- Roof air vent system
- Convenience center with slide, lights, awning and water system controls
- 6 gallon gas/electric DSI water heater
- Digital TV system
- 2 tone wood accents
- Oversized 60/40 residential sink
- 3-burner high output range with oven
- Coordinated wall paper border
- Radius shower curtain
- 12 volt power exhaust fan
- Oversized wardrobe
- Break-away switch
- Multiple emergency egress windows
- Smoke alarm
- Dead-bolt lock on entrance doors
- Insulated lockable radius baggage doors with hold backs
- Aerodynamic fender skirts
- 2-20lb. Propane bottles with flip top cover
- Electric adjustable awning
- Portable Outside Grill (GT only)
- Fold away exterior grab handle
- EZ lube axles
- Exterior light at dump valves
- 13.5 BTU ducted A/C
- Water system winterization ready
- 12 volt DVD/CD/AM/FM stereo with aux input & quality sound speakers
- Residential light fixtures in slide room (GT only)
- Metal high-rise faucet
- Range hood with 12-volt exhaust fan and light
- Medicine cabinet with mirror
- Pedestal foot flush toilet
- Quilted bedspread
- Nighttime reading lights
- Heavy duty safety chains with clasp
- GFI recepts
- Fire extinguisher
- Manual override on slide system
- Insulated radius entrance door with screen door
- Heavy duty front mechanical jack
- Dual battery rack over A-frame
- Lighted exterior pass thru storage compartment
- Patio entrance light
- Front diamond plate
- Exterior speakers
- Residential style furniture with high grade fabric
- Forced air furnace
- Residential grade durable linoleum
- 19 LCD flat screen HD TV with 12V operation
- Extra large double door refrigerator
- Microwave with carousel
- Residential hardwood cabinet doors
- Tub surround with built-in shelves
- Skylight over tub
- Decorative headboard
- 4 wheel electric brakes
- Tinted safety glass windows
- Carbon monoxide detector
- Propane gas leak detector
- Spare tire kit

## Unit Specifications

Shipping Weight	5540 lbs.
Carrying Capacity	1860 lbs.
Hitch	595 lbs.
Length	33' 9"
Width	8'
Height	10' 9"
Fresh Water	30 gal.
Waste Water	30 gal.
Gray Water	60 gal.
LPG	40 lbs.
Tire Size	205/75R14C

## Dealer's Note

A perfect sized rear kitchen means lots of home cooked meals and plenty of space to make it in the Passport 3100RK. Of course you're gonna need to relax after eating all of that food, so why not hop on the couch or one of the chairs to watch some TV, or lay in the queen size bed the Passport 3100RK provides.