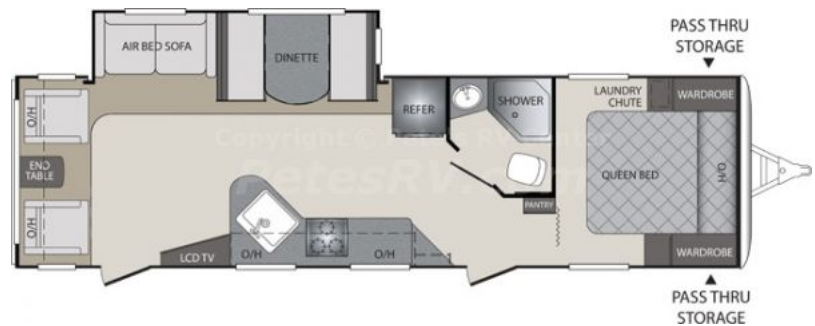




# 2012 Bullet Premier 30RLPR

## Basic Info

Stock Number	15265
Year	2012
Brand	Bullet Premier
Model	30RLPR
New / Used	New
Serial Nr	4YDT30R22CD421995
VIN	NA
Type	Travel Trailer
Manufacturer	Keystone
Chassis	NA
Mileage	NA
Length	33 ft 9 in (10.29 m)
Weight	5,750
Fuel	NA
Nr of Slideouts	1
Interior Color	BLACKBERRY



## Features and Equipment

- BLACKBERRY DECOR
- EXTERIOR CAMPING PACKAGE
- 15K BTU A/C
- RVQ GRILL
- FRAMELESS TINTED WINDOWS
- FULL DEPTH SLIDE ROOMS
- TOY LOCK SYSTEM
- MOTION SENSOR LIGHT
- 26" LCD TV
- PREMIER PACKAGE
- INTERIOR CAMPING PACKAGE
- RVIA SEAL
- FIBERGLASS FRONT CAP
- POWER TONGUE JACK
- INNERSPRING MATTRESSS
- BATTERY SWITCH OVER
- EXTERIOR PICNIC TABLE
- STEP LIGHT
- THERMAL PACKAGE
- ALUMINUM WHEELS
- WINTERIZATION
- VAULTED CEILING SYSTEM
- AIR BED SLEEPER SOFA
- XL ENTRY ASSIST HANDLE
- PORCELAIN TOILET
- MONITOR PANEL
- COMFORT PACKAGE 2

## Features and Equipment

- CONSTRUCTION
- Laminated Fiberglass Exterior Side Walls
- 6 and 8 I-Beam with Full-Length Welded Outrigger
- One Piece Seamless Rubber Roof
- R-11 Insulation in Floor
- 6 Gallon Gas/Electric DSI Water Heater
- Outside Shower (Hot and Cold Water)
- Aggressive Front Profile for Increased Towability
- 2 Thick Laminated Aluminum Floor
- ABS Enclosed Underbelly
- E-Z Lube Axles
- R-7 Insulation in Sidewalls
- EXTERIOR CAMPING PACKAGE
- Radius Entry Door with Gas Strut
- 4 Stabilizer Jacks
- Aluminum Framed Front, End and Side Walls
- In Frame Fresh, Grey, and Black Water Tanks
- Darco Moisture Barrier
- Electric Brake System (4wheels)
- R-11 Insulation in Roof
- Wide Stance E-Z Lube Axles
- Outside Speakers

- Electric Awning with Adjustable Arms
- EXTERIOR FEATURES
- Dual Propane Tanks with Cover
- Storage with Lighting
- Spare Tire
- 13.5 BTU Ducted A/C (N/A Micro Series)
- 19 LCD TV
- 3 Burner High Output Range
- Cabinet Doors
- Beauflor Linoleum
- Swivel TV with Mirror and Convenience Center (Per Floor Plan)
- 17 Oven (N/A Micro Series)
- Power Vent Fan
- Mirrored Wardrobes
- Individual Reading Lights
- Carbon Monoxide Detector
- Electric Brakes
- GFI Receipts
- Heated and Enclosed Underbelly
- Stainless Steel Appliances
- Frameless Tinted Windows
- Max Depth Slides
- Upgraded Exterior Graphics Package
- Radial Tires
- Outdoor Kitchen (27RB, 31BH)
- In Frame Dual Battery Rack
- LP Quick Connect
- Night Shades
- Microwave
- 9 Deep Oversized Single Basin Sink with High Rise Faucet
- Foot Flush Toilet
- INTERIOR FEATURES
- Swivel Rockers (Per Floor Plan)
- Night Shades in Living Area
- Chestnut Glazed Hardwood Cabinet Doors
- BATHROOM
- Solid Wood Medicine Cabinet
- MASTER BEDROOM
- Laundry Chute
- Smoke Alarm
- Safety Chains
- 2 Pipe off of Furnace to Underbelly
- PREMIER PACKAGE
- Vaulted Ceiling System
- Power Tongue Jack
- Progressive Interior Lighting
- TV Antenna and Cable Hook-Up
- Aluminum Wheels
- Oversized Exterior Pass Thru
- Amber Patio Light
- INTERIOR CAMPING PACKAGE
- CD/DVD/AM/FM Stereo with Aux and I-Pod Hookup
- 6 cu./ft. Double Door Refrigerator
- Solid Wood Raised Panel
- Tub Surround with Shelves
- 6 11 Vaulted Ceiling
- Pillow Back Furniture
- Spice Rack Valance
- Decorative Wall Border
- Deluxe Curved Shower Curtain
- Linen Storage
- Upgraded Innerspring Mattress
- Under Bed Storage
- SAFETY EQUIPMENT
- Fire Extinguisher
- Frameless Tinted Safety Glass Windows, Egress Windows (Fire Escape)
- THERMAL PACKAGE
- 30K BTU Furnace and Residential Heat Ducts
- Aerodynamic Fiberglass Front Cap
- Exterior LED Lights
- Air Bed Sofa Sleeper
- Chestnut Glazed Cabinetry

## Unit Specifications

Shipping Weight	5750 Lbs.
Carrying Capacity	1850 Lbs.
Length	33' 9"
Height	10' 11"
Fresh Water	41 Gal.
Waste Water	30 Gal.
Gray Water	30 Gal.
LPG	40 Lbs.
Tire Size	205/75R14C

## Dealer's Note

The Bullet Premier 30RLPR plants two cushy swivel chairs right in front of of the huge rear picture window. It's a great spot for two people to enjoy their morning cups of coffee! The Bullet Premier 30RLPR can sleep six comfortably with its generous U-shaped dinette and air bed sofa. There's also tons of storage space in several hardwood cabinets, a convenient corner pantry and laundry chute.