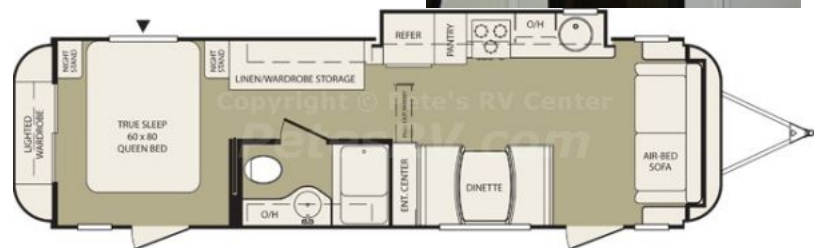




2012 Vantage 32FLS

Basic Info

| | |
|-----------------|-----------------------|
| Stock Number | 15460 |
| Year | 2012 |
| Brand | Vantage |
| Model | 32FLS |
| New / Used | New |
| Serial Nr | 4YDT32F22CK300069 |
| VIN | NA |
| Type | Travel Trailer |
| Manufacturer | Keystone |
| Chassis | NA |
| Mileage | NA |
| Length | 35 ft 10 in (10.92 m) |
| Weight | 6,855 |
| Fuel | NA |
| Nr of Slideouts | 1 |
| Interior Color | LANDSCAPE |



Features and Equipment

- LANDSCAPE DECOR
- 32" HD LCD TV
- CARBON MONOXIDE DETECTOR SEAL
- WINTERIZATION
- RECESSED LED LIGHTING THROUGHOUT
- 10 GALLON GAS/ELECTRIC WATER HEATER W/DSI
- POWER TONGUE JACK
- ADVANTAGE PACKAGE
- AIR MATTRESS HAB SOFA
- 15K BTU A/C
- STAINLESS STEEL APPLIANCES
- PULL-OUT SPRAYER FAUCET
- ALL IN ONE CONVENIENCE CENTER
- HI-GLOSS FIBERGLASS SIDEWALLS
- ALUMINUM WHEELS
- UNDERMOUNT SPARE TIRE
- RVIA
- FRONT AND REAR FIBERGLASS CAPS
- 7FT VAULTED CEILINGS
- INVISA-PULL GATE VALVES

Features and Equipment

- Classic, timeless shape that will look good many years from now. Clean, uncluttered exterior.
- Curved sidewalls, exterior and interior, creating a 101wide body
- Slideouts that conform to wall curvature inside and out!
- Recessed LED exterior lighting
- Cool tone high gloss gray exterior with black accents (bumper, wheelwell, windows).
- Uniform window line (all windows same height and distance off floor), clean appearance.
- Full front and rear caps. No boxy edges.
- Low slung chassis with a shorter overall height of 10' 5" (to top of A/C).
- Large (7") radius transition from side wall to roof.
- Window awning on front cap conceals window, provides exterior storage location.
- Center stop lamp.

- throughout.
- Separate high impact ABS rear bumper with haircell finish.
 - Vaulted ceiling with 7' interior height.
 - Cool gray high gloss color
 - Separate high impact ABS rear bumper with haircell finish
 - Storage compartment with 1" thick baggage door
 - Cable/Satellite prep
 - Invisa-pull gate valves
 - Welded aluminum framed curved side walls
 - Vacuum bonded construction
 - 3/8" roof decking
 - FLOOR
 - Chassis 8"
 - 4400 pound, 4" drop leaf spring axles
 - 12" electric brakes
 - 55 amp converter
 - Detachable 30 amp shore line
 - LP leak detector
 - Fire extinguisher
 - Safety chains
 - APPLIANCES
 - 3 burner range
 - 30,000 BTU furnace
 - Radius shower curtain
 - Tall (29") kitchen window with full panoramic view
 - LIVING AREA
 - slide motor
 - 7 foot interior height (center of coach)
 - Stainless steel appliance package
 - Residential pull-out sprayer faucet
 - All-in-one convenience center
 - High gloss sidewalls
 - Classic round tail lights recessed into cap.
 - Exterior convenience center on ODS.
 - EXTERIOR
 - Full fiberglass front and rear caps
 - Recessed LED exterior lighting throughout
 - Sleek grab handle
 - Awning
 - Exterior shower with hot and cold water
 - Solid block foam insulation
 - ROOF
 - One piece EPDM rubber roof
 - Welded aluminum laminated floor with 20" radius corners (front and rear)
 - Norco engineered frame, tapered Z main rails, huck fastened (minimal welding)
 - MOR/ryde suspension system
 - 225/75R15D radial tires
 - Two 30 lb. LP bottles with auto changeover
 - Systems monitor panel
 - Smoke detector
 - Tinted safety glass windows
 - Manual slide backup on all electric slideouts
 - AM/FM/CD/Stereo with DVD player and MP3 hookup
 - 10 gallon gas DSI water heater and bypass with instant hot feature
 - BATHROOM
 - Porcelain foot flush toilet
 - Residential pull-out sprayer faucet
 - Uniform window line throughout
 - Slideouts conform to wall contour
 - Recessed LED lighting throughout
 - Front and rear fiberglass caps
 - 7 foot vaulted ceilings
 - Invisa-pull gate valves
 - Cabled control valves for dump located behind separate skirt metal door.
 - State of the art curved walls
 - Fiberglass window awning (front only)
 - Black framed, tinted windows with full vent on every window
 - 30" wide radius main entry door with tall window & full vent
 - Fully enclosed underbelly
 - WALLS - CONSTRUCTION
 - High gloss finish
 - Arched interior & exterior roof rafters on 16" centers
 - 7" radius transition full length between roof and sidewalls
 - Enclosed and heated underbelly for tanks and valves
 - E coated frame
 - EZ lube axles
 - UTILITIES
 - Universal TV antenna
 - SAFETY
 - CO detector
 - Break away switch
 - Battery disconnect switch
 - 6 cu. Ft. two door refrigerator
 - Wall mount thermostat controlled A/C
 - Super suite tub design
 - KITCHEN
 - Steel ball bearing drawer guides
 - Norco cable slides (varying depths) with whisper quiet
 - Molded front and rear roof transitions
 - AdVantage PACKAGE (Mandatory)
 - Recessed LED lighting throughout
 - 10 gallon gas DSI water heater and bypass with instant hot feature
 - Power tongue jacks

Unit Specifications

| | |
|-------------------|-----------|
| Shipping Weight | 6855 lbs. |
| Carrying Capacity | 1345 lbs. |
| Hitch | 1015 lbs. |
| Length | 35' 10" |
| Width | 8' 6" |
| Height | 10' 6" |

| | |
|-------------|------------|
| Fresh Water | 50 gal. |
| Waste Water | 30 gal. |
| Gray Water | 30 gal. |
| LPG | 60 lbs. |
| Tire Size | 225/75R15D |

Dealer's Note

The Vantage 32FLS is a great front living room model that has a very nice modern interior with lots of space! Unlike most travel trailers, the Vantage 32FLS sports not one, but two wardrobes so you can bring along anything and everything you need!